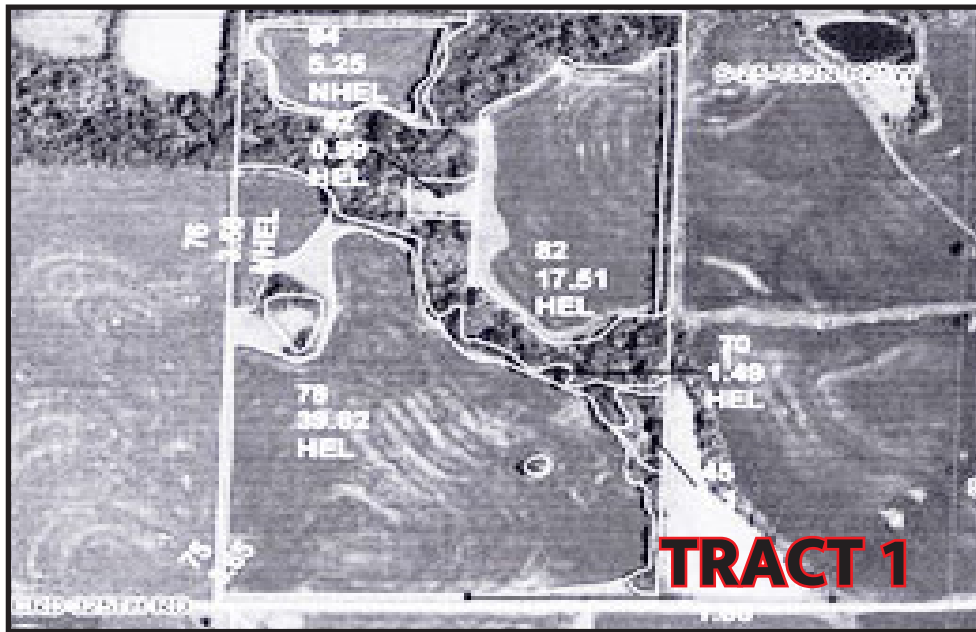


LAND - 332 ACRES M/L AUCTION

THURSDAY, SEPTEMBER 9, 2021 • 10:00 AM
MARTIN CENTER 1985 S ODELL MARSHALL, MO



332 ACRES M/L IN 4 TRACTS
C.A. MCBURNEY FARMS, INC.

TRACT 1: 100 acres located in Sec 25 T52N & 53N - R21W. FSA Corn base acres 35.5 Bean base acres 36.6. Currently 66 acres tilled; 2020 Taxes \$353.84

TRACT 2: 99.6 acres located in Sec 30 T52N-R20W. FSA Corn base acres 35.7 Bean base acres 36.8. Currently 70 acres tilled; 2020 Taxes \$383.20

TRACT 3: 34.18 acres located in Sec 30 T52N-R20W. FSA Corn base acres 9 Bean base acres 9.2. Currently 18 acres tilled; 2020 Taxes \$76.75

TRACT 4: 98.2 acres located in Sec 4 T51N-R19W. FSA Corn base acres 42.1 Bean base acres 43.4. Currently 79 acres tilled; 2020 Taxes \$440.15. PLC Corn yield 149 PLC Bean yield 45

Tracts 1, 2, & 3 are located N of Slater, MO State Road C to West 325th Road.

Tract 4 is located East of Gilliam, MO on Hwy 240.

TERMS: Buyer will receive 50% of 2021 crop. 10% down day of sale. Balance due at closing, 30 days or less. Sellers will furnish title insurance. Sellers will pay 2021 taxes. Statements day of sale my take precedence over printed material.



OWNER: C.A. MCBURNEY FARMS, INC.

SUMMERS AUCTIONEERS

JOE SUMMERS, AUCTIONEER • (660) 631-1894

MARSHALL, MISSOURI

www.summersauctioneers.com

STATEMENTS MADE DAY OF AUCTION TAKE PRECEDENCE OVER ALL PRINTED MATERIAL

SOIL LEGEND*

1	HAYNIE-WALDRON-LETA ASSOCIATION
2	KNOX-MENFRO-SIBLEY ASSOCIATION
3	MONONA-JOY-WINTERSET ASSOCIATION
4	DOCKERY-COLO ASSOCIATION
5	MACKSBURG-ARISPE ASSOCIATION
6	SIBLEY-HIGGINSVILLE ASSOCIATION
7	WELLER-WINFIELD-GOSS ASSOCIATION

*The units on this legend are described in the text under the heading "General Soil Map Legend".

Compiled 1988

